

# Alpha V40

## Pressure - Sensitive Label Applicator



### KEY FEATURES

- Applies p-s labels at rates up to 210 fpm
- Application of labels up to 4.72" W x 19.7" L
- Consistent label placement accuracy of  $\pm 0.04$ "
- Standard, multi-function controller eases operation

Weber's new Alpha V40 label applicator provides fast, dependable labeling for a diverse range of applications. This versatile system employs the wipe-on or tamp-blow method to apply pressure-sensitive labels in line at high speed.

The Alpha V40 automatically peels labels from the liner, then gently but firmly affixes them to products or packages as they pass by on a conveyor line or other handling system.

The wipe-on unit applies labels up to 4.72" wide and 19.7" long (98" long optional) at speeds up to 210 feet per minute, while the tamp-blow model handles labels up to the same width and 6.3" long. Both systems apply label to an accuracy of  $\pm 0.04$ ".

The system can be configured to label the sides, tops or bottoms of products. For added application utility, it is available in both right- and left-hand versions.

### Multi-function controller

The Alpha V40's integrated controller is the key to the versatile functionality of the labeling system. Valuable features include:

- Up to 30 different label settings can be stored, making label changeovers virtually effortless.
- Automatic compensation for missing labels on the web helps prevent double or skipped labeling.

- Sensor delay function provides for the exact positioning of labels without the need to relocate the product sensor.

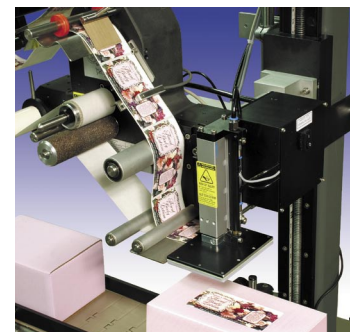
The front panel of the compact control box also features LCD readouts that include a label counter, length of feed, rate of advance, label sensor status, and more.

The controller's rear panel provides easy connections for a number of operational and monitoring systems.

### Reliability and versatility

The Alpha V40 boasts rugged cast aluminum construction to provide the durability required to withstand the rigors of industrial environments. In addition, the system's powerful stepper motor helps provide system control and dependable labeling accuracy.

Versatile options for the automatic labeling system include various product/package sensors, label sensor, warning/alert light array, and an adjustable mounting stand. Weber also manufactures a complete selection of standard, custom and prime labels to meet virtually any labeling need.



Alpha V40 is available with tamp-blow application.

# Alpha V40

## Pressure - Sensitive Label Applicator

### Dimensions

29.9" x 13.4" x 20.2"  
(76cm x 34cm x 51.2cm)

### Weight

48.5 lbs. (22kg)

### Electrical

115/230 VAC; 50/60 Hz

### Product Sensing

Photoelectric

### Label Roll Size

Up to 12" O.D. (300mm) wound on 3.0"  
(76mm) I.D. core

### Label Styling

Die-cut, waste removed, with a minimum of  
0.125" (3mm) separation between labels in  
the running direction

### Label Placement Accuracy

Accurate to  $\pm 0.04$ " (1mm) when labels are  
produced to specifications and product  
handling is controlled

### Standard Label Sizes

#### Wipe-On Applications:

Minimum width: 0.78" (20mm)  
Maximum width: 4.72" (120mm)  
Minimum length: 0.5" (12mm)  
Maximum length: 19.7" (500mm)  
Optional length up to 98" (2500mm)

#### Tamp-Blow Applications:

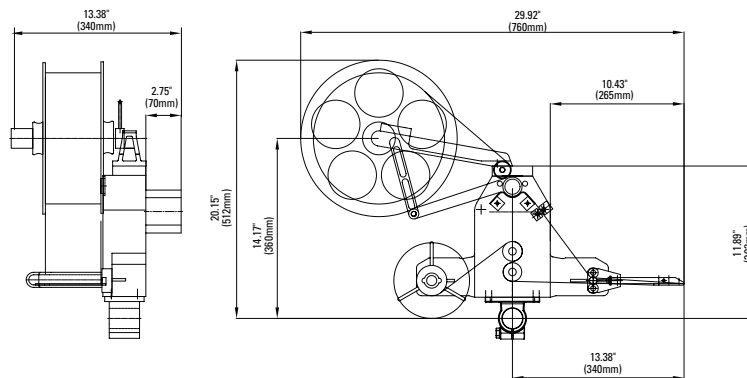
Minimum width: 0.78" (20mm)  
Maximum width: 4.72" (120mm)  
Minimum length: 0.78" (20mm)  
Maximum length: 6.3" (160mm)

### Labeling speed

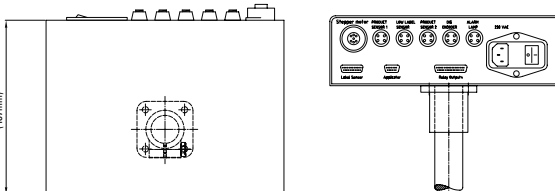
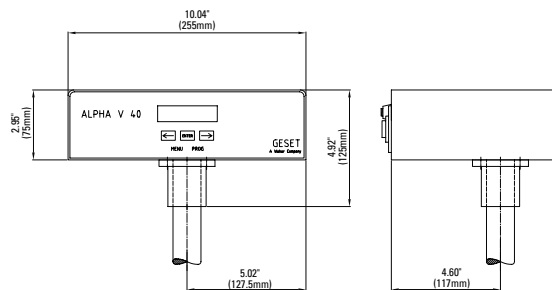
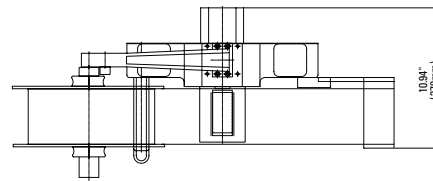
Up to 130 fpm (40m) or 210 fpm (64m),  
depending on label roll width and diameter  
and application method

### Options

Product sensor  
Label sensor  
One- or three-color warning light(s)  
Adjustable stand



Alpha V40 Wipe On  
Applicator



Alpha V40 Controller-Box

**Geset**  
A Weber® Company

**Weber**  
LABELING & CODING SOLUTIONS



## Weber Marking Systems, Inc.

### World Headquarters

Weber Marking Systems, Inc.  
711 W. Algonquin Road  
Arlington Heights, IL 60005-4457  
Phone: 847.364.8500  
Fax: 847.364.8575  
E-mail: info@webermarking.com  
www.webermarking.com

### Canada

Weber Marking Systems of Canada  
6180 Danville Road  
Mississauga, Ontario L5T 2H7  
Phone: 905.564.6881  
Fax: 905.564.6886  
E-mail: info@webermarking.ca  
www.webermarking.ca

### United Kingdom

Weber Marking Systems UK  
Macmerry Industrial Estate  
Tranent, East Lothian EH33 1HD  
Scotland  
Phone: 44.18.756.11111  
Fax: 44.18.756.13310  
E-mail: sales@weber.co.uk  
www.weber.co.uk

### Germany

Weber Marking Systems GmbH  
Postfach/Box 0154  
Honnefer Str. 41  
D-53572 Unkel/Rhein  
Phone: 49.2224.77080  
Fax: 49.2224.770820  
E-mail: info@webermarking.de  
www.webermarking.de

### Thailand

Weber Marking Systems (Thailand), Ltd.  
39/73 Samutsakom Industrial Estate  
Moo 2, Rama 2 Road, Bang Ka-Jao,  
Muang, Samutsakom 74000 Thailand  
Phone 66.0.34.490639  
Fax 66.0.34.490.638  
E-mail: sales@weber.co.th

### Belgium

Weber Marking Systems SA  
Interleuvenlaan Nr. 23, Bus 2  
3001 Leuven-Heverlee  
Belgium  
Phone: 32.16.38.79.50  
Fax: 32.16.38.79.59  
E-Mail: info@webermarking.be

### Denmark

Bluhm Danmark A/S  
Nordkrogen 7  
DK-7300 Jelling, Denmark  
Phone: 45.75.87.26.00  
Fax: 45.75.87.26.10  
E-mail: salesdk@bluhmsysteme.com  
www.bluhmsysteme.dk

### France

K-Roll Etiquetage  
ZI de Montaudran  
15, impasse Didier Daurat-BP 44419  
31 405 TOULOUSE CEDEX 4- FRANCE  
Phone: (33) 5.62.47.27.37  
Fax: (33) 5.62.47.16.26  
E-mail: k-roll@k-roll.fr  
www.k-roll.fr

### Austria

BluhmSysteme GmbH  
Rustorf 82  
A 4690 Schwanenstadt, Austria  
Phone: 43.7673.4972  
Fax: 43.7673.4974  
E-mail: gresch@bluhmsysteme.com

### Ireland

Weber Marking Systems Ireland  
61 Irish Street, Enniscorthy  
County Wexford, Ireland  
Telephone 353 539 233778  
Fax 353 539 233284  
E-mail: weberireland@eircom.net

### Turkey

Weber Etiket ve Etiketleme Sistemleri  
San ve Tic Ltd., Sti.  
Nazmi Akbaci Ticaret No. 208 AK  
TR-80670 Maslak Istanbul, Turkey  
Phone: 90.212.285.9400  
Fax: 90.212.285.0574  
E-mail: ildokuz@etaetiketleme.com